



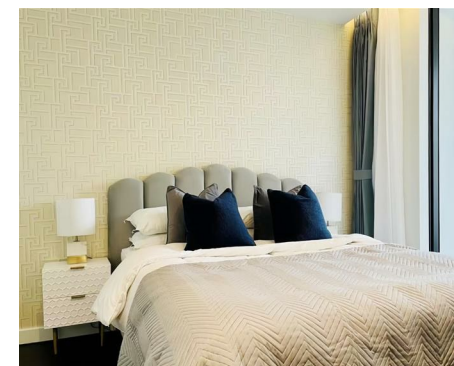
Let **UK** Home

1 Bedrooms

Flat

Located in London

£3,293 Per Month



info@letukhome.co.uk

<https://www.letukhome.co.uk/>

01795 358 886



67 Bondway London

SW8 1GR



Let UK Home are excited to offer a stunning luxury apartment located within the iconic Damac Tower, one of Nine Elms' most prestigious residential developments.

Designed in collaboration with Versace Home, this beautifully presented property offers contemporary living with premium finishes throughout.

The apartment features a bright and spacious open-plan living area with floor-to-ceiling windows, a high-specification fitted kitchen with integrated appliances, a generous double bedroom with built-in storage, and a stylish modern bathroom. Finished to an exceptional standard, the property is ideal for professionals seeking luxury living in Central London.

Residents benefit from an outstanding range of facilities including a 24-hour concierge service, residents' gym, swimming pool, spa, cinema room, residents' lounge, landscaped communal areas, and secure entry systems.

Perfectly positioned in the heart of Nine Elms, the property is within walking distance of Nine Elms and Vauxhall stations, providing excellent transport links across London. Battersea Power Station, the River Thames, shops, restaurants, cafés, and local amenities are all close by.

Offering a combination of luxury, convenience, and an exceptional location, this apartment presents a fantastic opportunity to enjoy one of London's most sought-after developments.

Early viewing is highly recommended.

67 Bondway London

£3,293 Per Month

- Located within the iconic Damac Tower, Nine Elms
- Residents' Swimming Pool, Jacuzzi & Spa
- Fully Furnished
- Cinema
- EPC Rating: B
- 24-Hour Concierge & Security
- Residents' Lounge & Co-Working Spaces
- Prime Location
- Gym





Let **UK** Home

3F 2 Eastbourne Terrace
Paddington
London
W2 6LG

01795 358 886

info@letukhome.co.uk

Council Tax Band: E

Local Authority:

Agents Note: Whilst every care has been taken to prepare these particulars, they are for guidance purposes only. All measurements are approximate and are for general guidance purposes only and whilst every care has been taken to ensure their accuracy, they should not be relied upon and potential buyers/tenants are advised to recheck the measurements.

Energy Efficiency Rating		Current	Potential
Very energy efficient - lower running costs			
(92 plus) A			
(81-91) B		81	81
(69-80) C			
(55-68) D			
(39-54) E			
(21-38) F			
(1-20) G			
Not energy efficient - higher running costs			
England & Wales		EU Directive 2002/91/EC	

<https://www.letukhome.co.uk/>